

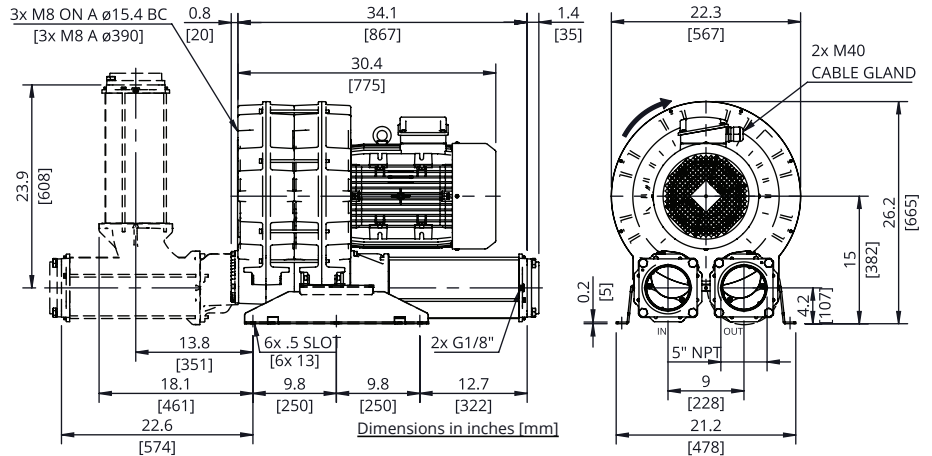
e11-TS

**Evolution Series
Technical Characteristics**

- Premium efficient motor
- High efficiency impeller
- Mountable in any position
- Maintenance free operation
- TEFC (IP55)

Optional Features

- Anodized aluminum components for corrosion resistance
- Increased sealing



Technical Specifications

Model No.	HP	Hz	Open Flow (cfm)	Max Pressure in. H ₂ O	Max Vacuum in. H ₂ O	Efficiency	Voltage	FLA	Starting Current Ratio ¹	dB(A) ²	Weight (lb)
SCL e11-TS-25-3	25	60	1304	50	50	91.7%	208-230/460	62 / 31	12.5	86	463.0
		50	1092	90	100	92.4%	200/400	69 / 34.5		82	
SCL e11-TS-25-3-575	25	60	1304	50	50	91.7%	575	24.8	12.5	86	463.0
SCL e11-TS-30-3	30	60	1304	70	70	91.7%	208-230/460	71.6 / 35.8	10.6	86	489.4
		50	1092	110	110	92.7%	200/400	77.8 / 38.9		82	
SCL e11-TS-30-3-575	30	60	1304	70	70	91.7%	575	28.6	10.6	86	489.4

Motors include normally closed thermal protector, 1.15 S.F. (60 Hz), tropicalized windings, Class F (B) insulation, and are suitable for use with a VFD (Contact FPZ for pneumatic and speed limits when used with a VFD).

¹Starting current ratio x fla = starting current

²Noise level measured at a distance of 1 m with inlet and outlet ports piped in accordance to ISO 3744

Data is subject to change without notice.

Recommended Accessories

Description	Pressure Safety Valve	Vacuum Safety Valve	Pressure Filter	Vacuum Filter	Check Valve
Part number	(2) VRL9 (25 HP) ³	(2) VRL9 (25 HP) ³	FL10	CTD-375P-500C	CV5-502M-1330
	(2) VRL9 (30 HP) ³	(2) VRL9 (30 HP) ³			

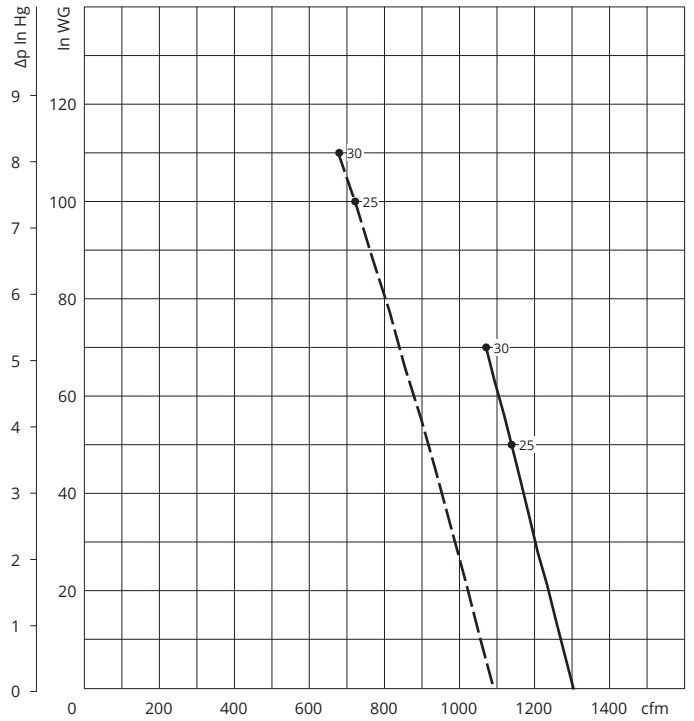
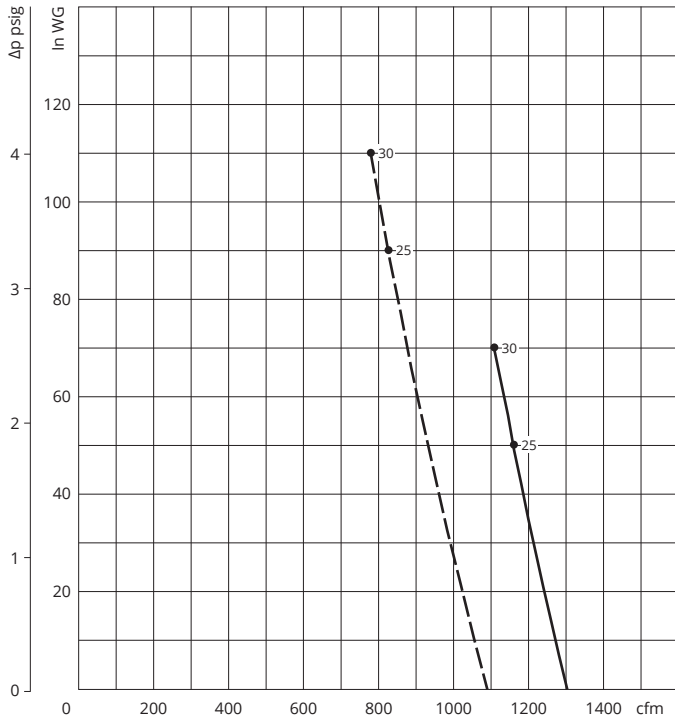
³Valve selections are based on 60 Hz and standard air. Valves are supplied uncalibrated. Safety valves are easy to calibrate, but can be ordered with factory calibration.



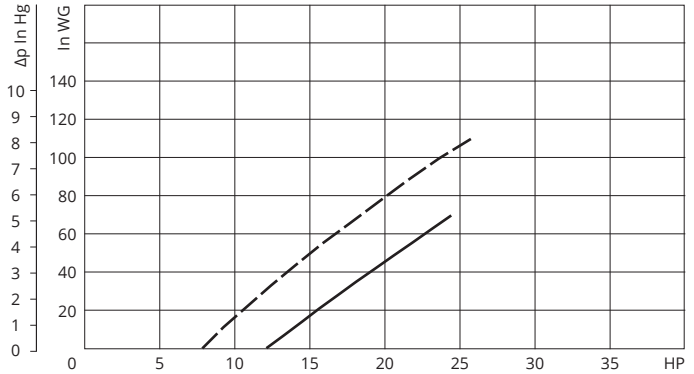
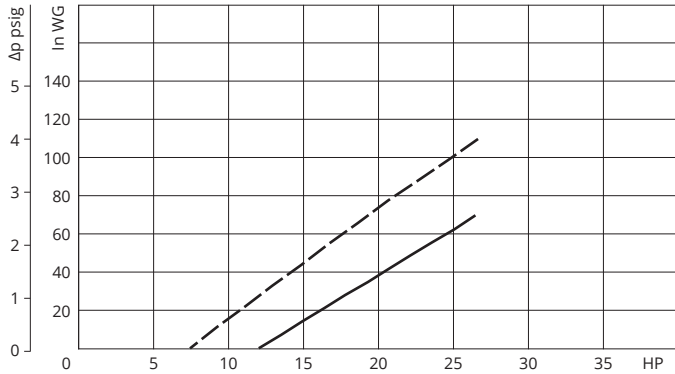
PRESSURE

VACUUM

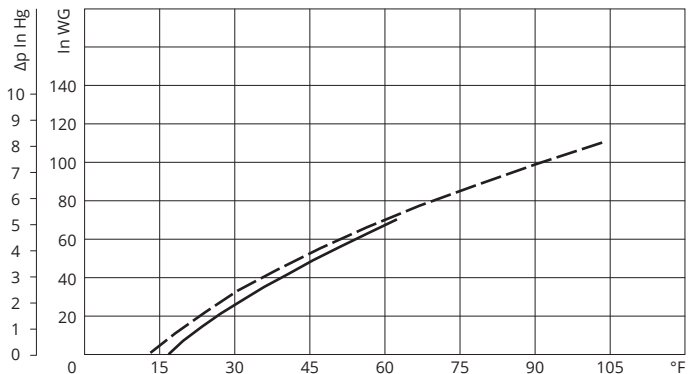
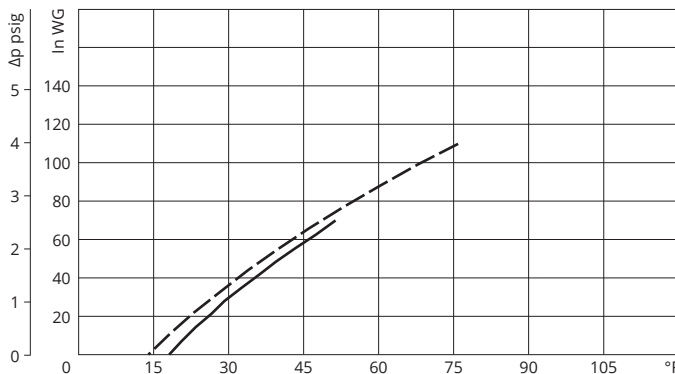
CAPACITY



ABSORBED POWER



TEMPERATURE INCREASE



Curves refer to air at 68°F temperature and 29.92 In Hg atmospheric pressure (abs) measured at inlet port. Values for flow, power consumption and temperature rise: +/-10% tolerance. Data subject to change without notice.

KEY - - - - 50 Hz
 — — — — 60 Hz